

FEATURES & SPECIFICATIONS

INTENDED USE — These specifications are for USA standards only. Square Straight Steel is a general purpose light pole for up to 39-foot mounting heights. This pole provides a robust yet cost effective option for mounting area lights and floodlights.

CONSTRUCTION — **Pole Shaft:** The pole shaft is of uniform dimension and wall thickness and is made of a weldable-grade, hot-rolled, commercial-quality steel tubing with a minimum yield of 55 KSI (11-gauge, .1196"), or 50 KSI (7-gauge, .1793"). Shaft is one-piece with a full-length longitudinal high-frequency electric resistance weld. Uniformly square in cross-section with flat sides, small corner radii and excellent torsional qualities. Available shaft widths are 4", 5" and 6".

Pole Top: A flush non-metallic black top cap is provided for all poles that will receive drilling patterns for side-mount luminaire arm assemblies or when ordered with PT option.

Handhole: A reinforced handhole with grounding provision is provided at 18" from the base on side A. Positioning the handhole lower may not be possible and requires engineering review; consult Tech Support-Outdoor for further information. Every handhole includes a cover and cover attachment hardware. The handhole has a nominal dimension of 2.5" x 5".

Base Cover: A durable ABS plastic two-piece full base cover, finished to match the pole, is provided with each pole assembly. Additional base cover options are available upon request.

Anchor Base/ Bolts: Anchor base is fabricated from steel that meets ASTM A36 standards and can be altered to match existing foundations; consult factory for modifications. Anchor bolts are manufactured to ASTM F1554 Standards grade 55, (55 KSI minimum yield strength and tensile strength of 75-95 KSI). Top threaded portion (nominal 12") is hot-dipped galvanized per ASTM A-153.

HARDWARE — All structural fasteners are high-strength galvanized carbon steel. All non-structural fasteners are galvanized or zinc-plated carbon steel or stainless steel.

FINISH — Extra durable standard powder-coat finishes include Dark Bronze, White, Black, Medium Bronze and Natural Aluminum colors. Classic finishes include Sandstone, Charcoal Gray, Tennis Green, Bright Red and Steel Blue colors. Architectural Colors and Special Finishes are available by quote and include, but are not limited to Hot-dipped Galvanized, Paint over Hot-dipped Galvanized, RAL Colors, Custom Colors and Extended Warranty Finishes. Factory-applied primer paint finish is available for customer field-paint applications.

WARRANTY — 1-year limited warranty. Complete warranty terms located at:

www.acuitybrands.com/support/warranty/terms-and-conditions

NOTE: Actual performance may differ as a result of end-user environment and application. Specifications subject to change without notice.

Catalog Number
Notes
Type



Anchor Base Poles

SSS

SQUARE STRAIGHT STEEL

SSS Square Straight Steel Poles

ORDERING INFORMATION

Lead times will vary depending on options selected. Consult with your sales representative.

Example: SSS 20 5C DM19 DDB

SSS							
Series	Nominal fixture mounting height	Nominal shaft base size/wall thickness ¹	Mounting ²		Options	Finish ¹⁰	
SSS	10'-39' (for 1/2 ft increments, add -6 to the pole height. Ex: 20-6 equals 20ft 6in.) See technical information table for complete ordering information.)	4C 4" 11g (.1196")	<u>Tenon mounting</u>		<u>Shipped installed</u> L/AB Less anchor bolts (Include when anchor bolts are not needed) VD Vibration damper TP Tamper resistant handhole cover fasteners HAxy Horizontal arm bracket (1 fixture) ^{5,6} FDLxy Festoon outlet less electrical ⁵ CPL12/xy 1/2" coupling ⁵ CPL34/xy 3/4" coupling ⁵ CPL1/xy 1" coupling ⁵ NPL12/xy 1/2" threaded nipple ⁵ NPL34/xy 3/4" threaded nipple ⁵ NPL1/xy 1" threaded nipple ⁵ EHHxy Extra handhole ^{5,7} MAEX Match existing ⁸ USPOM United States point of manufacture ⁹ IC Interior coating ¹⁰ UL UL listed with label (Includes NEC compliant cover) NEC NEC 410.30 compliant gasketed handhole (Not UL Labeled) <u>Shipped separately (replacement kit available)</u> (blank) FBC Full base cover (plastic) (blank) TC Top cap (blank) HHC Handhole cover	<u>Standard colors</u> DDBXD Dark bronze DWHXD White DBLXD Black DMBXD Medium bronze DNAXD Natural aluminum <u>Classic colors</u> DSS Sandstone DGC Charcoal gray DTG Tennis green DBR Bright red DSB Steel blue <u>Architectural Colors and Special Finishes¹¹</u> Galvanized, Paint over Galvanized, RAL Colors, Custom Colors and Extended Warranty Finishes available.	
		4G 4" 7g (.1793")	PT	Open top (includes top cap)			<u>AERIS™ Suspend drill mounting</u> ^{3,4}
		5C 5" 11g (.1196")	T20	2-3/8" O.D. (2" NPS)			DM19AST_ 1 at 90°
		5G 5" 7g (.1793")	T25	2-7/8" O.D. (2-1/2" NPS)			DM28AST_ 2 at 180°
		6G 6" 7g (.1793")					DM29AST_ 2 at 90°
							DM39AST_ 3 at 90°
							DM49AST_ 4 at 90°
							<u>OMERO™ Suspend drill mounting</u> ^{3,4}
							DM19MRT_ 1 at 90°
							DM28MRT_ 2 at 180°
							DM29MRT_ 2 at 90°
							DM39MRT_ 3 at 90°
							DM49MRT_ 4 at 90°
							<u>KAC/KAD/KSE/KSF/KVR/KVF Drill mounting</u> ³
							DM19 1 at 90°
							DM28 2 at 180°
							DM28 PL 2 at 180° with one side plugged
							DM29 2 at 90°
							DM39 3 at 90°
							DM49 4 at 90°
							<u>CSX/DSX/RSX/AERIS™/OMERO™/HLA/KAX Drill mounting</u> ³
							DM19AS 1 at 90°
							DM28AS 2 at 180°
							DM29AS 2 at 90°
							DM39AS 3 at 90°
							DM49AS 4 at 90°
							<u>RAD drill mounting</u> ³
							DM19RAD 1 at 90°
							DM28RAD 2 at 180°
							DM29RAD 2 at 90°
							DM32RAD 3 at 120°
							DM39RAD 3 at 90°
							DM49RAD 4 at 90°
							<u>ESX Drill mounting</u> ³
							DM19ESX 1 at 90°
							DM28ESX 2 at 180°
							DM29ESX 2 at 90°
							DM39ESX 3 at 90°
							DM49ESX 4 at 90°

- NOTES:
1. Wall thickness will be signified with a "C" (11 Gauge) or a "G" (7-Gauge) in nomenclature. "C" - 0.1196" | "G" - 0.1793".

2. PT open top poles include top cap. When ordering tenon mounting and drill mounting for the same pole, follow this example: DM28/T20.
The combination includes a required extra handhole.

3. Refer to the fixture spec sheet for the correct drilling template pattern and orientation compatibility.

4. Insert "1" or "2" to designate fixture size; e.g. DM19AST2.

5. Specify location and orientation when ordering option.
For "x": Specify the height above the base of pole in feet or feet and inches; separate feet and inches with a "-".
Example: 5ft = 5 and 20ft 3in = 20-3
For "y": Specify orientation from handhole (A,B,C,D)
Refer to the Handhole Orientation diagram below.
Example: 1/2" coupling at 5' 8", orientation C = CPL12/5-8C

6. Horizontal arm is 18" x 2-3/8" O.D. tenon standard, with radius curve providing 12" rise and 2-3/8" O.D. If ordering two horizontal arm at the same height, specify with HAxyy. Example: HA20BD.

7. Combination of tenon-top and drill mount includes extra handhole.

8. Must add original order number of existing pole(s).

9. Use when mill certifications are required.

10. Provides enhanced corrosion resistance.

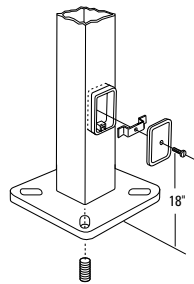
11. Additional colors available; see www.lithonia.com/archcolors or Architectural Colors brochure (Form No. 794.3). Available by formal quote only, consult factory for details.

SSS Square Straight Steel Poles

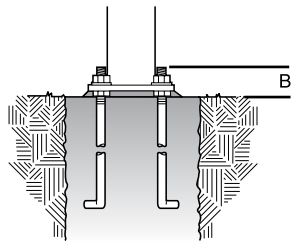
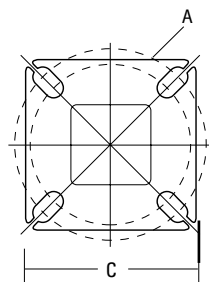
TECHNICAL INFORMATION — EPA (ft ²) with 1.3 gust													
Catalog Number	Nominal Shaft Length (ft.)*	Pole Shaft Size (Base in. x Top in. x ft.)	Wall thick (in)	Gauge	EPA (ft ²) with 1.3 gust						Bolt circle (in)	Bolt size (in. x in. x in.)	Approximate ship weight (lbs.)
					80 MPH	Max. weight	90 MPH	Max. weight	100 MPH	Max. weight			
SSS 10 4C	10	4.0 x 10.0	0.1196	11	30.6	765	23.8	595	18.9	473	8-9	3/4 x 18 x 3	75
SSS 12 4C	12	4.0 x 12.0	0.1196	11	24.4	610	18.8	470	14.8	370	8-9	3/4 x 18 x 3	90
SSS 14 4C	14	4.0 x 14.0	0.1196	11	19.9	498	15.1	378	11.7	293	8-9	3/4 x 18 x 3	100
SSS 16 4C	16	4.0 x 16.0	0.1196	11	15.9	398	11.8	295	8.9	223	8-9	3/4 x 18 x 3	115
SSS 18 4C	18	4.0 x 18.0	0.1196	11	12.6	315	9.2	230	6.7	168	8-9	3/4 x 18 x 3	125
SSS 20 4C	20	4.0 x 20.0	0.1196	11	9.6	240	6.7	167	4.5	150	8-9	3/4 x 18 x 3	140
SSS 20 4G	20	4.0 x 20.0	0.1793	7	14	350	11	275	8	200	8-9	3/4 x 30 x 3	198
SSS 20 5C	20	5.0 x 20.0	0.1196	11	17.7	443	12.7	343	9.4	235	10-12	1 x 36 x 4	185
SSS 20 5G	20	5.0 x 20.0	0.1793	7	28.1	703	21.4	535	16.2	405	10-12	1 x 36 x 4	265
SSS 25 4C	25	4.0 x 25.0	0.1196	11	4.8	150	2.6	100	1	50	8-9	3/4 x 18 x 3	170
SSS 25 4G	25	4.0 x 25.0	0.1793	7	10.8	270	7.7	188	5.4	135	8-9	3/4 x 30 x 3	245
SSS 25 5C	25	5.0 x 25.0	0.1196	11	9.8	245	6.3	157	3.7	150	10-12	1 x 36 x 4	225
SSS 25 5G	25	5.0 x 25.0	0.1793	7	18.5	463	13.3	333	9.5	238	10-12	1 x 36 x 4	360
SSS 30 4G	30	4.0 x 30.0	0.1793	7	6.7	168	4.4	110	2.6	65	8-9	3/4 x 30 x 3	295
SSS 30 5C	30	5.0 x 30.0	0.1196	11	4.7	150	2	50	--	--	10-12	1 x 36 x 4	265
SSS 30 5G	30	5.0 x 30.0	0.1793	7	10.7	267	6.7	167	3.9	100	10-12	1 x 36 x 4	380
SSS 30 6G	30	6.0 x 30.0	0.1793	7	19	475	13.2	330	9	225	11-13	1 x 36 x 4	520
SSS 35 5G	35	5.0 x 35.0	0.1793	7	5.9	150	2.5	100	--	--	10-12	1 x 36 x 4	440
SSS 35 6G	35	6.0 x 35.0	0.1793	7	12.4	310	7.6	190	4.2	105	11-13	1 x 36 x 4	540
SSS 39 6G	39	6.0 x 39.0	0.1793	7	7.2	180	3	75	--	--	11-13	1 x 36 x 4	605

* EPA values are based ASCE 7-93 wind map. For 1/2 ft increments, add -6 to the pole height. Ex: 20-6 equals 20ft 6in.

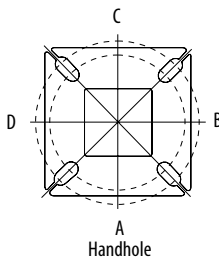
BASE DETAIL



POLE DATA								
Shaft base size	Bolt circle A	Bolt projection B	Base diameter C	Base plate thickness	Template description	Anchor bolt description	Anchor bolt and template number	Anchor bolt description
4"C	8" - 9"	3.25" - 3.75"	8" - 8.25"	0.75"	ABTEMPLATE PJ50004	AB18-0	ABSSS-4C	3/4"x18"x3"
4"G	8" - 9"	3.38" - 3.75"	8" - 8.25"	0.875"	ABTEMPLATE PJ50004	AB30-0	ABSSS-4G	3/4"x30"x3"
5"	10" - 12"	3.5" - 4"	11"	1"	ABTEMPLATE PJ50010	AB36-0	ABSSS-5	1"x36"x4"
6"	11" - 13"	4" - 4.50"	12.5"	1"	ABTEMPLATE PJ50011	AB36-0	N/A	1"x36"x4"



HANDHOLE ORIENTATION



Default DM19 is on side B.

IMPORTANT INSTALLATION NOTES:

- Do not erect poles without having fixtures installed.
- Factory-supplied templates must be used when setting anchor bolts. Lithonia Lighting will not accept claim for incorrect anchorage placement due to failure to use Lithonia Lighting factory templates.
- If poles are stored outside, all protective wrapping must be removed immediately upon delivery to prevent finish damage.
- Lithonia Lighting is not responsible for the foundation design.